



CITY COUNCIL

June 10, 2024

6:00 PM, Council Chambers - 111 E. Maple Ave.

To view a Council meeting agenda, visit <https://independencemo.portal.civicclerk.com/> and select 'Most Recent Council Agenda'.

PRESENTATIONS

1. Street Maintenance, Street Conditions and Traffic Calming Report
2. Memorial Day Storm Response

STAFF REPORTS

INFORMATION ONLY

1. **Please Note:** In accordance with RSMo. 610.021, the City Council may convene in an Executive Session during or after the meeting, in the Council Chambers and move to Conference Room D for the closed meeting, on matters of litigation, legal action, and/or attorney client communications, as permitted by Sec. 610.021(1), on matters of personnel, as permitted by Sec. 610.021(3) and personnel records, as permitted by 610.021(13), on matters of contracts, as permitted by 610.021(12), on matters of real estate, as permitted by 610.021(2) and/or matters of labor negotiations, as permitted by 610.021(9).



Pavement Management

City Council Report

June 10, 2024

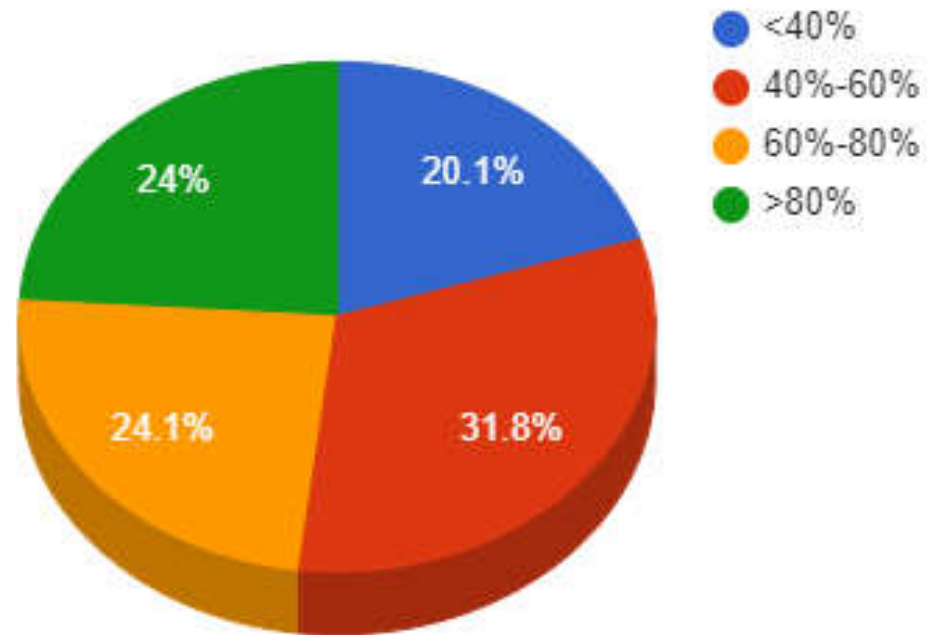


★ A GREAT AMERICAN STORY ★

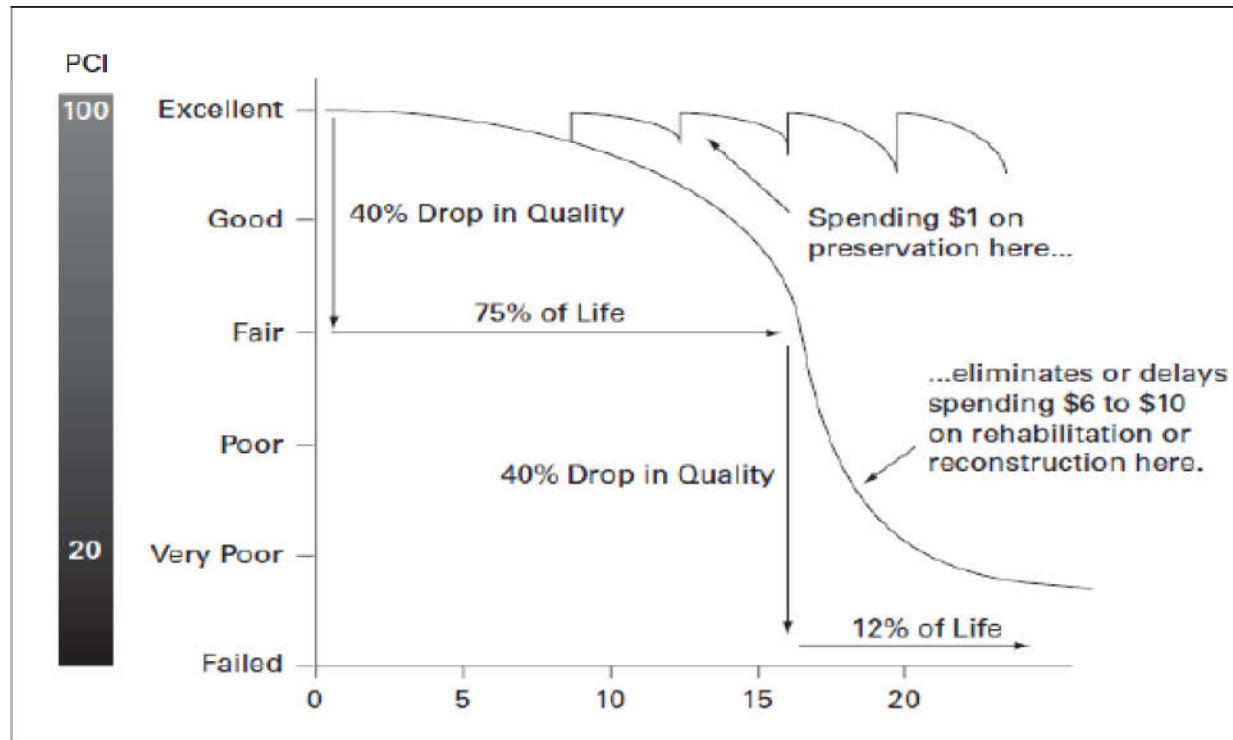
Pavement Management

- Planning of pavement maintenance and restorative treatments to maximize the value and life of our roadways
 - Historically ONLY restorative treatments (i.e. mill & overlay) have been performed
 - Utilizing cost-effective maintenance approaches since 2022
 - No “one size fits all” treatment
 - Mitigation of restoration through maintenance
 - Develop a data-driven approach
 - Rapid assessment AI tool
 - Formal PCI evaluation every 3-5 years

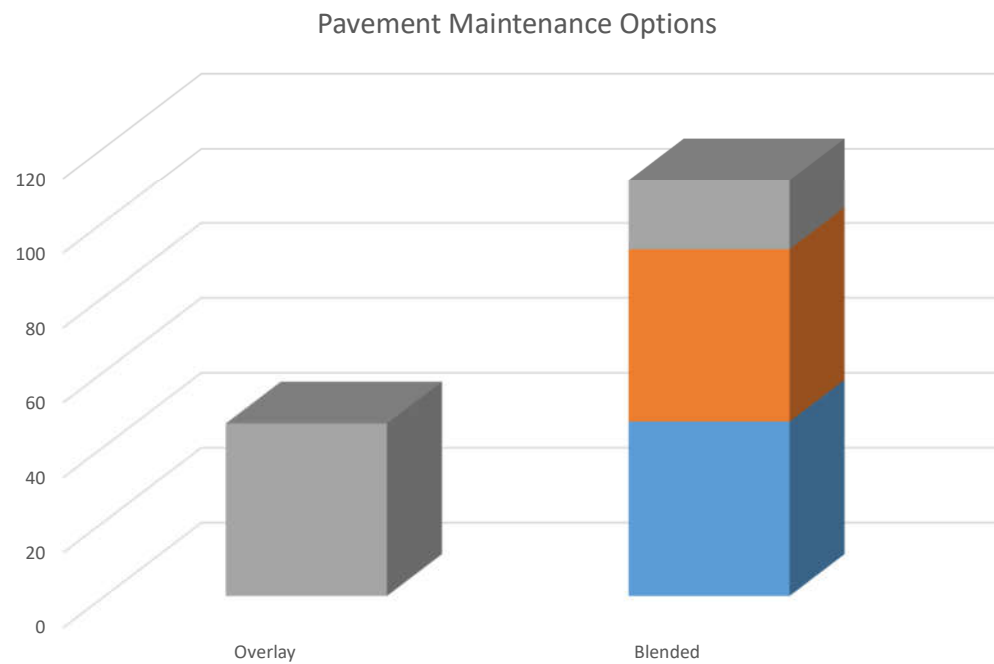
Pavement Condition Index



Program Objective



Approaches



Street Needs

Overlay	Lane Miles	Total Cost
District 1	71.92	\$5,554,295.30
District 2	86.49	\$6,679,518.91
District 3	115.07	\$8,886,718.02
District 4	77.09	\$5,953,568.19
Citywide	350.57	\$27,074,100.42
Partial Depth	Lane Miles	Total Cost
District 1	55.5	\$13,050,048.00
District 2	54.69	\$12,859,587.84
District 3	66.55	\$15,648,300.80
District 4	41.33	\$9,718,170.88
Citywide	218.07	\$51,276,107.52

Full Depth	Lane Miles	Total Cost
District 1	112.88	\$69,851,950.08
District 2	99.08	\$61,312,289.28
District 3	60.26	\$37,289,852.16
District 4	93.09	\$57,605,581.44
Citywide	365.31	\$226,059,672.96
Reconstruction	Lane Miles	Total Cost
District 1	1.97	\$3,206,189.18
District 2	4.92	\$8,007,335.42
District 3	6.78	\$11,034,498.82
District 4	2.67	\$4,345,444.22
Citywide	16.34	\$26,593,467.65

Total Outstanding Need: \$331,003,349

Bridge Needs

<u>Bridges</u>	<u>Total Cost</u>
Crysler Ave. Bridge	\$1,010,519.00
Ash St. Bridge over UPRR	\$608,857.00
Kentucky Bridge over Mill Creek	\$225,589.50
Lee's Summit Bridge over UPRR	\$55,453.85
Main St Bridge over UPRR	\$77,314.50
Noland Rd. Bridge over KCS	\$144,599.50
Kentucky Ave. Bridge over Rock Creek	\$250,000.00
Lake City Valley Bridge	\$275,000.00
Lexington Ave. Bridge	\$1,680,407.87
RD Mize Rd. Bridge over Little Blue Trail	\$2,854,000.00
Heidelberger Bridge	\$460,000.00
Valley View Parkway Bridge	\$1,500,000.00
Wilson Ave Bridge	\$500,000.00
Southside Blvd. Bridge	\$420,000.00
Citywide	\$10,061,741.22



INDEPENDENCE
★ MISSOURI ★

A GREAT AMERICAN STORY



Traffic Calming

- Application process
 - Begins with at least 5 signatures
 - Traffic study required
 - Requires 70% approval of the petition area
- Types of traffic calming devices
 - Speed humps
 - Curb extensions
 - Speed feedback signs



Questions?

★ A GREAT AMERICAN STORY ★

Memorial Day Storm Response

Emergency Management, IPL, Communications



INDEPENDENCE
★ POWER & LIGHT ★

Events and Actions Leading Up to Storm

- Staff on standby for all departments
- Activated the EOC (5:30pm)
- Began reading the models and updates from NWS
 - Monitored western movement
- At 11:00pm storms move into the area
 - ~45minutes
- 6:20am Communication team notified
- 7:30am Damage Assessment

INDEPMO Alert:

SVREAX

The National Weather Service in Pleasant Hill has issued a

* Severe Thunderstorm Warning for...

Eastern Wyandotte County in northeastern Kansas...

Johnson County in east central Kansas...

Northwestern Jackson County in west central Missouri...

* Until 1130 PM CDT.

* At 1059 PM CDT, a severe thunderstorm was located near Olathe, moving northeast at 45 mph.

HAZARD...60 mph wind gusts.

SOURCE...Radar indicated.

IMPACT...Expect damage to roofs, siding, and trees.

INDEPENDENCE

6/10/2024

★ POWER & LIGHT ★



2

Storm Facts

- At 11:00pm storms moved into the area. (~45 minutes)
- National Weather Service estimated 50-60mph wind gusts around Jackson County.
- Evergy peak outage 133,000
- IPL peak outage 7,072



INDEPENDENCE

6/10/2024

★ POWER & LIGHT ★



3

Storm Damage



INDEPENDENCE

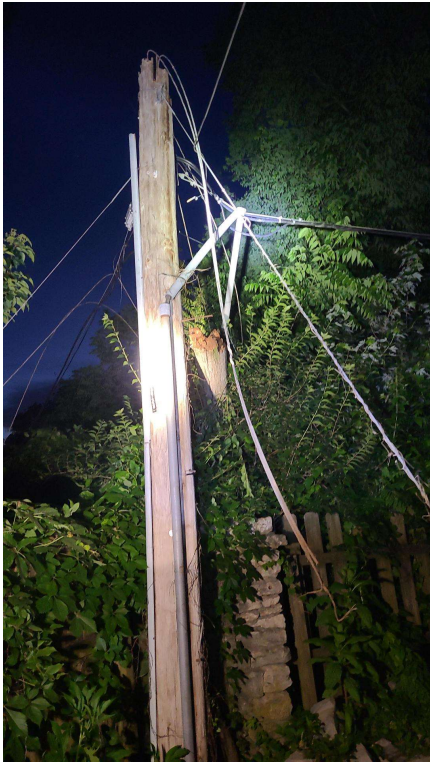
6/10/2024

★ POWER & LIGHT ★



4

Storm Damage



INDEPENDENCE

6/10/2024

★ POWER & LIGHT ★



5

City Employees

- Memorial Day weekend:
 - 34 linemen
 - Linemen worked 16-hour shifts with 8 hours off throughout the weekend
 - Support Staff were placed on around-the-clock coverage to help with storm recovery efforts



How IPL Prioritizes Outages

- The greatest number of customers in one location
- Second, we target groupings of customers and move to smaller group outages
- Last, the individual customer outages
- Critical Care Program



Mutual Aid Requested

- Quick action with our partner, MPUA (Missouri Public Utilities Alliance), we got assistance from 3 city utilities through the Mutual Aid Program.
 - Columbia sent a 5-man crew and equipment
 - Higginsville sent a 3-man crew
 - Harrisonville sent a 3-man crew



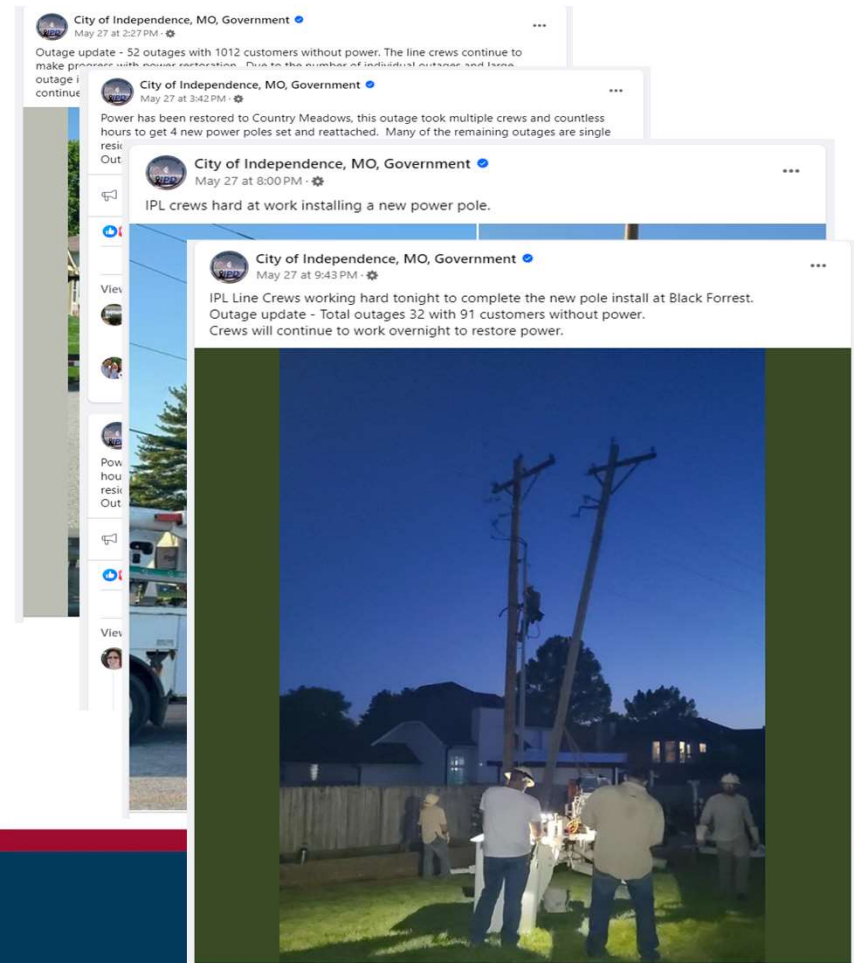
Country Meadows Outage

- Country Meadows saw the largest and longest outage
 - 4 damaged poles, complexity and location of the damage
- One resident allowed IPL trucks to enter their yard to access damage
 - This resulted in a significant time savings and contributed to a reduction in outage length



Communication Efforts

- IPL and Communication teams worked together on 13 posts over 3 days.
 - Several posts received 16,000+ impressions
 - 60,000+ individuals reached
 - 132% increase in interaction



INDEPENDENCE

6/10/2024

★ POWER & LIGHT ★

Current Status

- Drop Off Depot
- Temporary repairs will be made permanent
- There are some streetlights that were impacted by the storm



Technology Initiatives

- IPL is instituting a new monitoring program utilizing satellite imagery and drones to evaluate trees and vegetation around our power lines.
 - Should be in service late summer
- Auto-text features
 - IPL is working with Tech Services to enable texting features for customer communication during outages
- AMI



A Few Key Takeaways

- Every storm is different- You can't compare one storm to another
- IPL maintains a Diamond Reliability status from APPA and has one of the top 10% reliability statistics in the nation
- Staff conducted debriefs to determine what worked well and what we can improve on



Questions ?



INDEPENDENCE
★ POWER & LIGHT ★